





# THE SUNNY SIDE OF LIFE

Clean Comics That Will Amuse Both Old and Young

## BIG TOP

By ED WHEELAN

## LALA PALOOZA — A Tight Fit

By RUBE GOLDBERG

## S'MATTER POP— Well, Sir, This Is a Tough One

By C. M. PAYNE

## MESCAL IKE

By S.L. HUNTLEY

Goodness! How Terrible!

## POP— A Ready Answer

By J. MILLAR WATT

## Cheerful News

## HELPFUL SON

The angler was relating a fishing story to his neighbors. "Yes," he said, proudly, "I caught the biggest fish of my career last night. It was a bass, and weighed seven pounds, two ounces." His small son, who had been listening, chipped in: "Yes, and daddy was so kind he gave it to my kitten."

## Lobster

The waiter was taking the order of a pretty girl who was accompanied by a pudgy middle-aged man. When she did not mention the lobster included in the meal she ordered, he asked: "And how about the lobster?" To which the fair lady replied: "Oh, he can order whatever he likes."

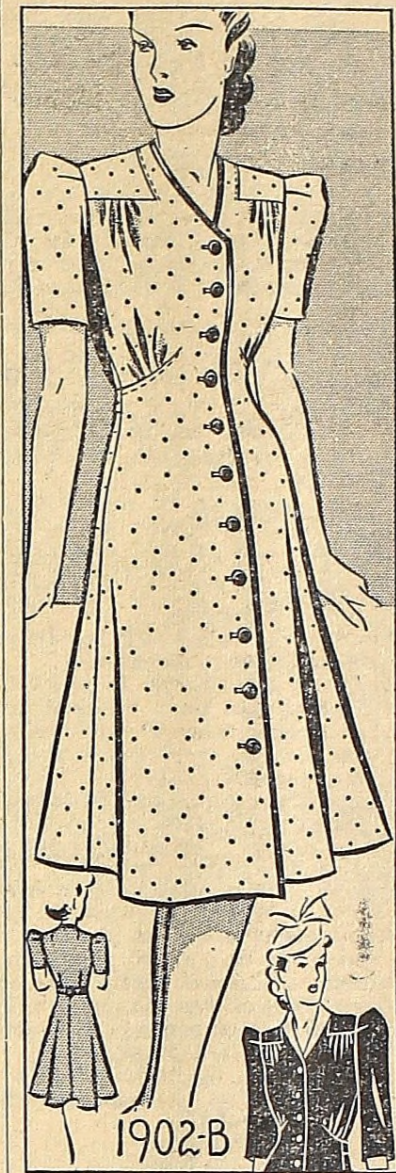
## Natural Flair for It

"Whatever happened to Jones? You know the chap who let the grass grow under his feet?" "Oh, yes. He's done very well in making lawns."

## DIFFICULT DECISIONS

By GLUYAS WILLIAMS

# Patterns SEWING CIRCLE



about it is slenderizing as well as smart.

Barbara Bell Pattern No. 1902-B is designed for sizes 36, 38, 40, 42, 44, 46, 48, 50, and 52. Size 38 requires 4 1/2 yards of 39-inch material without nap; with short sleeves; 4 3/4 yards with three-quarter; 3 1/4 yards braid or bias fold, or 1/2 yard contrast for collar.

For a pattern of this attractive model send 15 cents in coin, your name, address, style, number and size to The Sewing Circle Pattern Dept., Room 1324, 211 W. Wacker Dr., Chicago, Ill.

## Ask Me Another A General Quiz

### The Questions

1. Were the blood vessels in a human body placed in one line, how far would they reach?
2. Was the Statue of Liberty in New York harbor brought here as a finished statue?
3. What is meant by a runner getting his second wind?
4. When was the Mississippi river formed?
5. What kind of fruit is a monastery?
6. How many primary human emotions are there?
7. What portion of the Great Lakes belongs to the United States?

### The Answers

1. Over 2,000 miles.
2. No. After being exhibited in Paris, it was taken down and shipped in cases.
3. An adjustment of the heart rate to the intake and outgo of air in the lungs.
4. During the latter part of the Ice age, about 20,000 years ago.
5. A rare fruit from Puerto Rico with a taste similar to the pineapple and banana.
6. There are 3 primary human emotions: anger, fear, and love.
7. Of the Great Lakes, 60,770 square miles lie on the United States side, and 33,940 square miles on the Canadian side.

IT'S a button-front style (1902-B) which is one thing decidedly to recommend it, and this suave, simple dress has lots of other good points, too. It can be made with plain v-neckline and edged with bias fold. Or it can be made with a narrow roll collar as its only trimming. Sleeves are either short or three-quarter length. It's simple and unhampering enough for house wear, in gingham, linen or chambray; also tailored enough for the street, in thin wool, flat crepe or small-figured print. It has just the detailing you like, if you have size to consider—a bodice deftly gathered for correct bust fit, beneath a smooth shoulder-yoke, a slim-hipped skirt, and a waistline drawn in by a sash bow or buckled belt. Everything

## AROUND THE HOUSE

**For Leather Chairs.**—Rub equal parts of linseed oil and vinegar, well shaken, into leather chairs, occasionally. It keeps them in good condition.

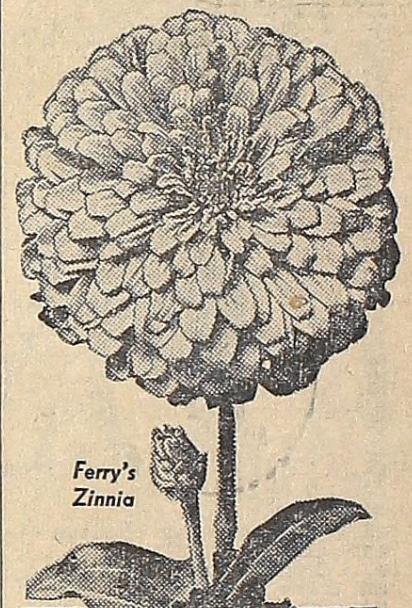
**Don't throw away bulbs** grown in the house. After they are through blooming set away until leaves dry and plant in the garden in the spring. They may not bloom until the second year.

**Save the Buttons.**—The continual ripping off of buttons by the clothes wringer can be prevented by folding the buttons inside the garment and holding it flat as you turn it through the wringer.

**Bathe Plants.**—Plants drink through their leaves, hence an occasional bath or spraying helps keep house plants healthy by freeing the leaves of dust.

**When poaching eggs,** let water come to a full rolling boil, drop eggs into it, turn out gas and eggs will finish poaching in the boiling water.

**It is not too early to look over** window screens. Mend and paint them now so they will be ready when it is time to put them in.



Ferry's Zinnia

You'll be Rich!

Gorgeous blooms in wealthy profusion. Your yard aglow all summer. Buy the convenient way from your dealer's display.

**FERRY'S DATED SEEDS**

# FOOLISH

## BEACONS OF SAFETY

Like a beacon light on the height—the advertisements in newspapers direct you to newer, better and easier ways of providing the things needed or desired. It shines, this beacon of newspaper advertising—and it will be to your advantage to follow it whenever you make a purchase.



**Noble Gases**  
Noble gases are gaseous elements including argon, helium, neon, krypton, nitrogen and xenon, and are so-called because they do not enter into combination with any of the other elements.


**Wanted**  
**Live Stock**  
Shipping Twice a Week  
**D.I. PEARSALL**  
HALE

**A.A. McGuire**  
Watch, Jewelry & Optical Repairing  
Tawas City

**Tawas City Electric Service**  
Refrigeration Air Conditioning  
Electrical Appliances and Ranges  
House and Power Wiring  
**John St. James**  
Phone 360

**GREVE ELECTRIC**  
Light and Power Wiring  
Repairing Alteration  
HALE, MICHIGAN  
Telephone No. 60

**OUR HOUSE IS ON FIRE!**



Who would think of a pencil and paper at a time like this? And yet your own fire insurance policy states that a complete list of destroyed and damaged property is required, for settlement. After a fire is too late! You'll never remember everything!

The time to make this list is before fire strikes. We have prepared a special booklet that helps you. It lists things—room by room. Suggests items often forgotten. It is easy to make a list of property, if you do it sanely and calmly in advance. Then you are ready. Write for this booklet. It is absolutely free. Mail the coupon.

Without charge or obligation, please send me your Household Inventory Booklet.

Name   
Street   
City  State

**Walter J. Laidlaw**  
TAWAS CITY

**Wilber**  
Mr. and Mrs. Kenneth Raymond and children, of Caro, spent the week end at the Robert Hilbrecht home.  
William Phelps is visiting relatives in Detroit.  
Mr. and Mrs. Clarence Davey and children, of East Tawas, spent Monday at the William Phelps home.  
Mr. and Mrs. John Haglund and daughter, Joan, of Oscoda, visited Sunday afternoon at the G. Olson home.  
Gordon Clute and his mother, of Detroit, spent the week end visiting relatives here.  
A number of friends surprised Mrs. Floyd Schaff Thursday evening of last week, when they dined in and helped her celebrate her birthday.  
Friday evening of last week the Oscoda bus made its usual route and took a number of pupils to Oscoda to attend the basketball game.  
Mr. and Mrs. Ernest Gregory and Mr. and Mrs. Terryah and daughter, of Midland, visited recently at the Herbert Phelps home.  
Mrs. Eli Herrick, of East Tawas, is caring for Mrs. Abbott, who is staying with her daughter, Ms. Al Simmons.  
William Tinker, who is employed in Detroit, spent the week end with his family here.  
Russell Tomlinson, who is employed at Flint, spent the week end at his home here.  
Silver Valley is an attraction for many of the people from here.

**Hemlock**  
Charles Brown spent Saturday at Lansing as a delegate to the Michigan Live Stock Exchange at the Hotel Olds.  
The many friends here of Mrs. Jane Chambers were grieved at her death and extend their deepest sympathy to the family.  
Mr. and Mrs. Raoul Herman and daughter, of Pontiac, spent the week end here and at Oscoda.  
A large number from here attended the Grange meeting at Whittemore on Tuesday evening.  
Lola Searett is working in Tawas City for Mrs. Finley.  
Mr. and Mrs. Charles Brown entertained at Sunday dinner their children, Mr. and Mrs. Russell Binder and sons, Charles and Robert, and Mr. and Mrs. Roul Herman and daughter, Joan, and Miss Ardeen Herman, of Bay City.  
Harvey McVyr is spending a few weeks at his home here due to a lay off in Detroit where he has been employed.  
Mrs. Elizabeth Ferrister is at Whittemore helping to care for a sick relative.

**Notable for Royal Tombs**  
Hue, Indo-China, is notable for its royal tombs where rest the former emperors of the province of Annam. One of the principal tombs, that of Emperor Khai Dinh, took ten years to build. Like other royal burial plots this one rises in a series of terraces flanked by gardens, moats and patterned retreats. Inside a great temple, that tops a hill, is a figure of the emperor seated on a gold replica of his throne in the imperial palace. The walls are decorated with hunting scenes made of bits of inlaid colored glass.

**Mortgage Sale**  
Default having been made in the conditions of a certain mortgage made by Jane Ferns of Reno township, Iosco County, Michigan to Stella Van Camp, dated the 15th day of March, A. D. 1918, and recorded in the Register of Deeds' office in Liber 21 of Mortgages on page 254, said mortgage being assigned to Allan C. Van Camp on the 26th day of July 1918, said assignment being recorded in Liber 20 of Mortgages, page 433, and again assigned by Allan C. Van Camp to Stella Van Camp on the 14th day of July, 1926, said assignment being recorded in Liber 26 of Mortgages, on page 305 in the Register of Deeds' Office, Iosco County, Michigan on which mortgage there is now claimed to be due for principal and interest the sum of Five Hundred Forty-two and 35-100 (\$542.35) Dollars and an Attorney's fee of Fifteen (\$15.00) Dollars as provided by law, and no suit or proceedings at law having been instituted to recover the moneys secured by said mortgage or any part thereof;

Notice Is Hereby Given, That by virtue of the power of sale contained in said mortgage and the statute in such case made and provided, on Saturday the 30th day of March, A. D. 1940 at ten o'clock in the forenoon, the undersigned will at the front door of the court house in the city of Tawas City, that being the place where the Circuit Court for the County of Iosco is held, sell at public auction to the highest bidder, the premises described in said mortgage, for so much thereof as may be necessary to pay the amount as aforesaid due on said mortgage, with seven (7%) per cent interest and all legal costs, together with said Attorney's fee to-wit: All that certain piece of land situated in the Township of Reno, Iosco County, Michigan, described as follows, to-wit: The west half (1/2) of the northwest quarter (1/4) of section twenty-four (24) in township twenty-two (22) north, range five (5) east excepting a parcel of land containing one hundred twenty (120) square rods, lying in the northwest corner of above description and heretofore deeded to the Reno Baptist church by the said Jane Ferns.

Stella Van Camp, Mortgagee.  
John A. Stewart, Attorney for Mortgagee.  
Business Address: Tawas City, Michigan.  
Dated: December 26, 1939.

**Notice**  
At a regular meeting of the Board of County Road Commissioners of Iosco County, Michigan held on the 10th day of February 1940, by a majority of yeas and nays vote of said commission it was determined to take over and constitute as county roads under provisions of Chapter 4 of Act 283 of Public Acts of 1909 and Act 130 of Public Acts of 1931 as amended by Act 36 of Public Acts of 1939 the following roads and streets and alleys:  
**Plainfield Township 24 N. R. 5 E.**  
1.2 Miles beginning near the E. 1/4 corner on the south line in section 5 and extending in a northerly direction approximately 1.2 miles to the north line of said section near the 1/4 corner. (Adder Road)  
0.85 Mile on the south line of section 16 beginning at the S. E. section corner of said section and extending in a westerly direction along the section line 0.85 mile. (Addison Road)  
1.0 Mile on the south line of section 15. (Abbot Road)  
(0.5 mile) East 0.5 of the north line of section 1c. (Adams Road)  
2.4 Miles, beginning at a point on the north line of section 3 near the N. W. corner of said section, thence in an easterly direction along the section line a distance approximately 0.5 mile, thence alternating in a southeasterly and southwesterly direction thru section 3 and in to section 11 a distance of approximately 1.9 miles to a point approximately 0.2 mile south and 0.2 mile east of the north 1/4 corner on the west line of section 11 containing in all approximately 2.4 miles. (Amazon Road)  
0.75 Mile beginning at a point near the east 1/4 corner on the north line of section 2 and extending in a southwesterly direction a distance of approximately 0.75 miles to a point near the 1/4 corner in the east line of section 2. (Albert Road)  
1.0 mile on the south line of section 14. (Ash Road)  
2.7 Miles beginning at a point near the 1/4 corner in the east line of section 13 and extending in a northwesterly direction to intersect the north line of section 12 near the east 1/4 corner, thence continuing in a northwesterly direction in section 1 to intersect the west line of section 1 near the west 1/4 corner. (Albert Road)  
**Plainfield Township 23 N. R. 6 E.**  
1.0 Mile on the east line of section 6. (Allen Road)  
1.0 Mile on the east line of section 7. (Allen Road)  
0.5 Mile on the north and south 1/2 line in south 1/2 of section 7. (Alma Road)  
0.5 Mile on the north and south 1/2 line in west 1/2 of section 7. (Alma Road)  
(0.2 mile) East 0.2 of the mile on the south line of section 7. (Alton Road)  
1.0 mile on the east line of section 18. (Allen Road)  
1.0 Mile on the east line of section 20. (Dam Road)  
1.75 Miles beginning at a point near the 1/4 corner in the north line of section 20 and extending 0.75 of a mile in a southeasterly direction to

**WANT AD COLUMN**

**DRY WOOD FOR SALE**—\$15 per cord, delivered. Vernon Eckstein.

**FOR SALE**—Bicycle. Robert Murray, Tawas City.

**HONEY FOR SALE**—Comb or extracted. Julius Anderson, Tawas City, R. 3.

**FOR SALE**—Violin and case, \$200. Lewis A. Wheeler, East Tawas.

**FOR SALE**—Belgian colt, coming one year old, or will trade on cow or young bull. Enquire at Herald Office.

**FOR SALE**—Dry, mixed wood, reasonable price at farm, Wm. Anderson, Alabaster.

**FARMERS ATTENTION**—We pay cash for beef hides. Ferguson's Market, Tawas City.

**FOUND**—Brown, liver spotted hound. Arnold Anschuetz.

**WANTED AT ONCE**—Girl to do steady housework. Give references. Phone 8, Hale Tourist Home, Hale, Mich.

**WANTED**—Used electric water pump with tank. Write price and details to H. W. Babcock, 11345 Grandville, Detroit.

**RELIABLE MAN WANTED**—Steady work, good pay. Call on farmers. No experience of capital required. Make up to \$10 a day. Write Mr. Raby, Box 192, Bay City, Mich.

Loading  
**Live Stock and Poultry**  
FOR DETROIT STOCK YARDS MONDAY AND WEDNESDAY OF EACH WEEK. PUBLIC UTILITY AND CARGO INSURANCE.  
Write or See  
**Rudy Gingerich**  
Tawas City  
Phone 197 F-11

intersect the east line of section 20 near the east 1/4 corner, thence continuing in an easterly direction to intersect the east line of section 22 near the east 1/4 corner. (Arvin Road)  
1.0 Mile on the east line of section 17. (Dam Road)  
1.0 Mile on the east line of section 8. (Dam Road)  
1.0 Mile on the south line of section 8. (Acme Road)  
1.0 Mile on the east line of section 5. (Dam Road)  
(0.4 mile) East 0.4 of the mile on the south line of section 4. (Alpine Road)  
1.0 Mile on the south line of section 3. (Alpine Road)  
1.0 Mile on the east line of section 3. (Alfred Road)  
1.0 Mile on the east line of section 19. (Alfred Road)  
(0.4 mile) West 0.4 of the mile on the south line of section 10. (Acme Road)  
1.0 Mile on the east line of section 15. (Alfred Road)  
1.0 Mile on the south line of section 9. (Acme Road)  
(0.2 mile) East 0.2 of the south line of section 7. (Acme Road)  
1.0 Mile on the east line of section 25. (Creek Road)  
0.75 mile North 1/4 mile on the east line of section 33. (Creek Road)  
0.7 mile East 0.7 mile on the south line of section 28. (Broad Road)  
1.0 mile on the south line of section 27. (Broad Road)  
(0.5 mile) West 0.5 mile on south line of section 26. (Broad Road)  
1.0 Mile on the east line of section 2. (Bank Road)  
1.0 Mile on the east line of section 11. (Bank Road)  
(0.25 mile) North 0.25 mile east line of section 14. (Bank Road)  
1.0 Mile on the south line of section 2. (Alpine Road)  
1.0 Mile on the south line of section 1. (Alpine Road)  
(0.75 mile) East 0.75 mile on the south line of section 15. (Beverly Road)  
1.0 Mile on the south line of section 14. (Beverly Road)  
1.0 Mile on the south line of section 13. (Beverly Road)  
0.2 Mile on the south line of section 23. (Bengal Road)  
1.0 Mile on the south line of section 24. (Bengal Road)  
3.0 Mile beginning at a point near the S. W. corner of section 6 and extending in an easterly direction to a point near the north and south 1/4 line of said section and thence continuing in a northeasterly direction intersecting the north line of section 5 near the south 1/4 corner and thence continuing across section 4 and 5 in a northeasterly direction intersection the north line of section 4 near the east 1/4 corner. (Largo Road)  
**Plainfield Township T 23 N. R. 5 E.**  
1.1 Miles beginning at a point near east 1/4 corner on the south line of section 12 and extending in the northeasterly direction to a point near the north 1/4 corner on the east line of section 12. (Ball Road)

**Plainfield Township T. 23 N. R. 7 E.**  
1.0 Mile on the west line of section 4. (Pierce Road)  
**Plainfield Township T. 23 N. R. 6 E.**  
(0.5 Mile) The south 0.5 mile on line between sections 32 and 33. (Picket Road)  
1.0 Mile beginning at a point near the 1/4 corner on the south line of section 7 and extending in a northerly direction to a point near the 1/4 corner in the north line of section 7. (Alma Road)  
0.5 Mile, beginning at a point near the center of section 7 on the Alma road and extending in a westerly direction approximately 0.5 mile to a point near the 1/4 corner on the west line of section 7. (Gill Road)  
**Baldwin Township T. 22 N. R. 7 E.**  
0.8 Mile, beginning at a point near the south 1/4 corner on the east line of section 3 and extending in a westerly direction parallel to the south line of said section a distance of 0.8 miles in all. (Post Road)  
**Baldwin Township T. 22 N. R. 8 E.**  
(0.25 mile) The west 0.25 mile on the south line of section 7. (Bygden Road)  
**Tawas Township T. 22 N. R. 7 E.**  
1.9 Miles, beginning at a point near the north 1/4 corner on the east line of section 9 and extending in a westerly direction parallel to the north line of said section a distance of approximately one mile thence continuing parallel to the north line of section 8 a distance of approximately 0.5 mile, thence in a northwesterly direction 0.4 mile to intersect the north line of section 8 near the west 1/4 corner. In all 1.9 mile. (Essex Road)  
**Tawas Township T. 22 N. R. 7 E.**  
1.0 Miles on the north line of section 18. (Spartan Road)  
**Burleigh Township T. 21 N. R. 5 E.**  
(0.25 mile) The south half of the north half on the east line of section 19. (Provost Road)  
**Grant Township T. 22 N. R. 6 E.**  
1.0 Mile on line between sections 4 and 5. (Picket Road)  
(0.5 mile) The north half mile on line between sections 8 and 9. (Picket Road)  
**Au Sable Township T. 23 N. R. 9 E.**  
1.0 mile on the west line of section 5. (Kennedy Road)  
1.0 mile on the west line of section 8. (Kennedy Road)  
1.0 Mile on the west line of section 4. (Grass Road)  
1.0 Mile on the west line of section 6. (Meade Road)  
(0.5 mile) The north 0.5 mile of the west line of section 7. (Meade Road)

**Coastguardville, N. J. Crocker's Sub-division, Pine Ridge, Supervisors' Plat of Pinehurst.**  
**Baldwin Township T. 22 N. R. 9 E.**  
Huron Shore Subdivision, Huron Heights, Lubway's Subdivision, Avalon Beach, Crescent Beach, Butler Heights.  
**Oscoda Township T. 23 N. R. 9 E.**  
Map of Oscoda, The Oscoda Boom Company's Division, Gratwick, Smith & Fryer's Addition of Oscoda, Gratwick, Smith & Fryer's 2nd Addition to Oscoda, Loud, Gay & Company's Addition to Oscoda, Loud, Gay & Company's 2nd Addition to Oscoda.  
**Oscoda Township T. 24 N. R. 9 E.**  
Daly's Addition to Oscoda, Plat of Oscoda Beach, VanEttan East Shores, VanEttan West Shores Subdivision, VanEttan White Pines, Warner Point.  
**Oscoda Township T. 24 N. R. 8 E.**  
Foote Site.

**Plainfield Township T. 23 N. R. 5 E.**  
Ella, Village of Hale, Long Lake Village, Iosco Heights, Koksosing Subdivision, First Addition to Koksosing, Coban's Bass Lake Subdivision, Supervisors' Plat of Plainfield Heights.  
**Plainfield Township T. 24 N. R. 5 E.**  
E. Luce's City of Hygeia, Chain Lakes Health Resort.  
**Plainfield Township T. 23 N. R. 6 E.**  
Indian Head Point, Flint Police Benefit Association Club, Luce and McKay's Indian Waters.  
**Wilber Township T. 23 N. R. 7 E.**  
Van Natter's Subdivision, W. G. Van Natter's Subdivision.  
**Iosco County Road Commission.**  
Ernest Crego, Chairman,  
Elmer Britt, Member,  
J. A. Mielock, Member.

A beautiful service need not be costly.  
**24 Hour Ambulance service.**  
\*\*\*  
**JACQUES Funeral Home**  
TAWAS CITY Phone 242

**Sixth Annual Builders Show**  
Bay City, Michigan  
March 2 to 10  
A great display of the most Modern Building Materials and Appliances  
Information on Repairing, Remodeling, New Construction, New Appliances.  
**\$50 Cash Door Prize and Daily Prizes**  
Cooking School Daily except Sat. and Sun.  
**Bay City Armory**  
Admission 10c

**More QUANTITY!**  
IT'S LARGER-LONGER-WIDER!



**More Room Inside!** Plenty of head room, elbow room and shoulder room in Oldsmobile! Plenty of room to stretch your legs! Both front and rear seats are exceptionally wide in all models.



**Longer from Bumper to Bumper!** Even the lowest priced Olds is a big, luxurious car, measuring 197 1/2" over all. They're all longer than last year—longer than many cars of much higher price.



**Bodies are Wider!** No wonder these cars are so roomy. Look at the width of the bodies! They're safer, as well—with more vision in windows and windshield and Safety Plate Glass throughout.

**More QUALITY!**  
IT'S SMARTER-RICHER-SMOOTHER!



**Better Looking!** Oldsmobile's front end is smart, distinctive, different from the rest. Radiator grilles are die-cast for greater strength and longer life. Headlamps are the new Sealed-Beam safety type.



**Greater Luxury!** Seat cushion springs are individually wrapped and tied. Foam Rubber cushions are standard on the Custom Cruiser, optional on Sixty and Seventy. Upholstery is more luxurious.



**More Power!** Olds Sixty's Econo-Master engine now develops 95 H. P.—delivers sensational performance in traffic or on the open road—yet uses less gasoline. Come, drive a bigger and better Olds!

**OLDSMOBILE**  
PRICED FOR EVERYBODY  
Coupes, \$807 and up. Sedans, \$853 and up. Delivered at Lansing, Michigan. Prices include Safety Glass, Chrome Window Reveals, Bumpers, Spare Wheel, Tire, Tube, Dual Trumpet Horns, 2 Windshield Wipers, Vacuum Booster Pump, 2 Sun Visors. Transportation based on rail rates, state and local taxes (if any), optional equipment and accessories—extra. Prices subject to change without notice.  
A GENERAL MOTORS VALUE

**BIGGER AND BETTER IN EVERYTHING!**

**WHITE SALES & SERVICE**





